

BOMBTRACK

RAGE AGAINST THE MACHINE

♩ = 76 INTRO

Drum notation for the first part of the intro, featuring a 4/4 time signature and a "Rest 6 Bars" instruction. The notation shows a series of eighth notes in the right hand and a consistent bass drum pattern.

Drum notation for the second part of the intro, marked with "3X". It features a pattern of eighth notes in the right hand and a bass drum pattern.

Drum notation for the third part of the intro, showing a continuation of the eighth note and bass drum patterns.

VERSE

Drum notation for the first part of the verse, marked with "3X". It features a pattern of eighth notes in the right hand, some with 'x' marks, and a bass drum pattern.

Drum notation for the second part of the verse, continuing the eighth note and bass drum patterns.

Drum notation for the third part of the verse, marked with "3X". It features a pattern of eighth notes in the right hand, some with 'x' marks, and a bass drum pattern.

Drum notation for the fourth part of the verse, continuing the eighth note and bass drum patterns.

CHORUS

Drum notation for the first part of the chorus, marked with "3X". It features a pattern of eighth notes in the right hand, some with 'x' marks, and a bass drum pattern.

2 BOMBTRACK

Musical notation for the first section of the track, featuring a series of eighth notes with various articulations (accents and slurs) and a double bar line.

VERSE

Musical notation for the first line of the verse, featuring eighth notes with accents and slurs, and a double bar line.

Musical notation for the second line of the verse, featuring eighth notes with accents and slurs, and a double bar line.

Musical notation for the third line of the verse, featuring eighth notes with accents and slurs, and a double bar line.

Musical notation for the fourth line of the verse, featuring eighth notes with accents and slurs, and a double bar line.

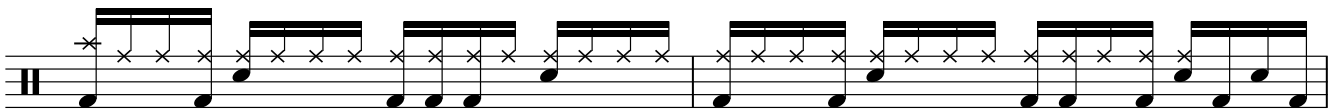
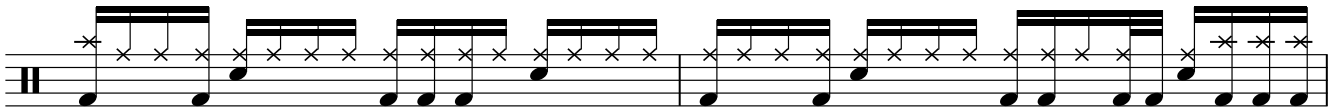
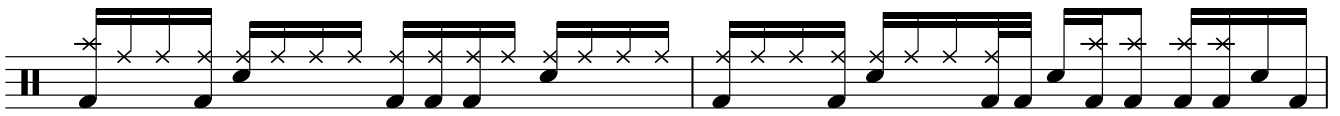
CHORUS

Musical notation for the chorus, featuring eighth notes with accents and slurs, and a double bar line with repeat signs. A '4X' multiplier is indicated at the end.

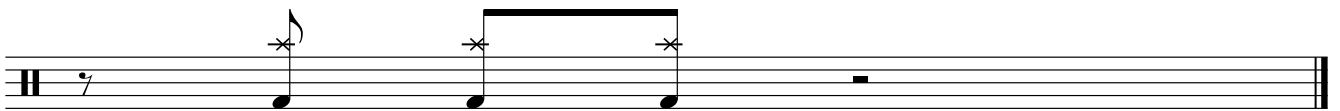
BRIDGE

Musical notation for the first line of the bridge, featuring eighth notes with accents and slurs, and a double bar line.

Musical notation for the second line of the bridge, featuring eighth notes with accents and slurs, and a double bar line.



OUTRO



Fine