

BUBBLES

BIFFY CLYRO

♩ = 147 INTRO Gtr.

Intro guitar notation in 4/4 time. It begins with two measures of whole rests. The third measure starts with a treble clef, a key signature of one sharp (F#), and a guitar pick symbol. The melody consists of eighth notes with 'x' marks above them, indicating muted notes. The sequence is: F#4, G4, A4, B4, C5, B4, A4, G4, F#4, G4, A4, B4, C5, B4, A4, G4, F#4.

VERSE

Verse guitar notation line 1. It starts with a double bar line and repeat sign. The melody consists of eighth notes with 'x' marks above them: F#4, G4, A4, B4, C5, B4, A4, G4, F#4, G4, A4, B4, C5, B4, A4, G4, F#4. The final note has a circled 'o' above it, indicating an open string.

Verse guitar notation line 2. It continues with eighth notes with 'x' marks: F#4, G4, A4, B4, C5, B4, A4, G4, F#4, G4, A4, B4, C5, B4, A4, G4, F#4. The final measure contains a 4-measure rest symbol (a '4' above a double slash).

Verse guitar notation line 3. It begins with a 4-measure rest symbol (a '4' above a double slash). The melody then continues with eighth notes with 'x' marks: F#4, G4, A4, B4, C5, B4, A4, G4, F#4, G4, A4, B4, C5, B4, A4, G4, F#4. The final note has a circled 'o' above it.

Verse guitar notation line 4. It features two first endings. The first ending consists of eighth notes with 'x' marks: F#4, G4, A4, B4, C5, B4, A4, G4, F#4, G4, A4, B4, C5, B4, A4, G4, F#4. The second ending consists of eighth notes with 'x' marks: F#4, G4, A4, B4, C5, B4, A4, G4, F#4, G4, A4, B4, C5, B4, A4, G4, F#4. The final note has a circled 'o' above it.

CHORUS

Chorus guitar notation line 1. It starts with a double bar line and repeat sign. The melody consists of eighth notes with diamond-shaped flags below them: F#4, G4, A4, B4, C5, B4, A4, G4, F#4, G4, A4, B4, C5, B4, A4, G4, F#4.

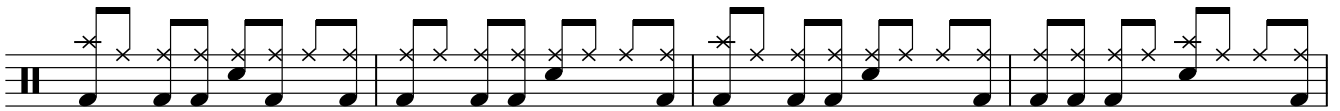
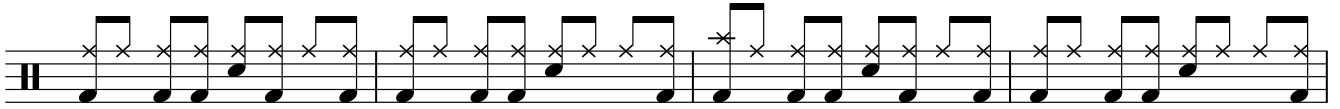
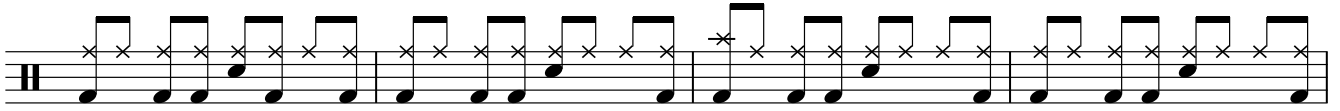
Chorus guitar notation line 2. It begins with a 2-measure rest symbol (a '2' above a double slash). The melody continues with eighth notes with diamond-shaped flags: F#4, G4, A4, B4, C5, B4, A4, G4, F#4, G4, A4, B4, C5, B4, A4, G4, F#4. The final note has a circled 'o' above it.

BRIDGE

Bridge guitar notation line 1. It starts with a first ending bracket. The melody consists of eighth notes with diamond-shaped flags: F#4, G4, A4, B4, C5, B4, A4, G4, F#4, G4, A4, B4, C5, B4, A4, G4, F#4. The final note has a circled 'o' above it.

Bridge guitar notation line 2. It continues with eighth notes with diamond-shaped flags: F#4, G4, A4, B4, C5, B4, A4, G4, F#4, G4, A4, B4, C5, B4, A4, G4, F#4. The final note has a circled 'o' above it.

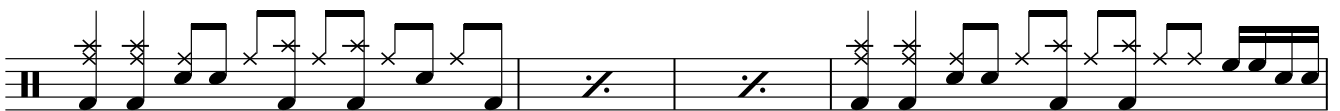
2 BUBBLES



D.S. al Fine (verse no repeat)



OUTRO



Fine