

CAN'T STOP

RED HOT CHILI PEPPERS

♩ = 90 INTRO

INTRO

VERSE

VERSE

CHORUS

CHORUS

2 CAN'T STOP

Musical notation for the first staff of 'CAN'T STOP'. It features a drum set icon on the left. The staff contains a sequence of eighth notes with various articulations: some have an asterisk (*), some have an open circle (o), and some have an 'x' above them. A first ending bracket labeled '1.' spans the final two measures, which end with a double bar line and repeat dots.

Musical notation for the second staff of 'CAN'T STOP'. It features a drum set icon on the left. The staff contains a sequence of eighth notes with various articulations. A second ending bracket labeled '2.' spans the first two measures. The word 'BRIDGE' is centered above the staff. The staff ends with a double bar line and repeat dots.

Musical notation for the third staff of 'CAN'T STOP'. It features a drum set icon on the left. The staff contains a sequence of eighth notes with various articulations. The staff ends with a double bar line and repeat dots.

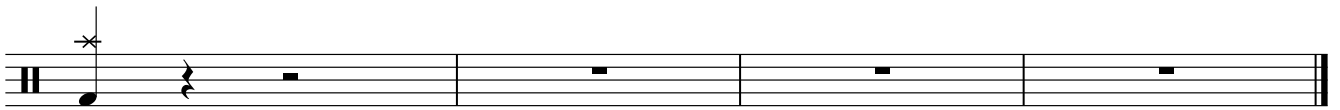
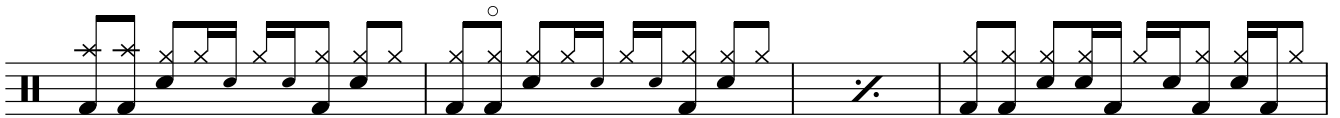
Musical notation for the fourth staff of 'CAN'T STOP'. It features a drum set icon on the left. The staff contains a sequence of eighth notes with various articulations. The staff ends with a double bar line and repeat dots.

Musical notation for the fifth staff of 'CAN'T STOP'. It features a drum set icon on the left. The staff contains a sequence of eighth notes with various articulations. The staff ends with a double bar line and repeat dots.

Musical notation for the sixth staff of 'CAN'T STOP'. It features a drum set icon on the left. The staff contains a sequence of eighth notes with various articulations, including rests. The staff ends with a double bar line and repeat dots.

Musical notation for the seventh staff of 'CAN'T STOP'. It features a drum set icon on the left. The word 'OUTRO' is centered above the staff. The staff contains a sequence of eighth notes with various articulations. The staff ends with a double bar line and repeat dots.

Musical notation for the eighth staff of 'CAN'T STOP'. It features a drum set icon on the left. The word 'N.C.' is centered above the staff. The staff contains a sequence of eighth notes with various articulations. The staff ends with a double bar line and repeat dots.



Fine