
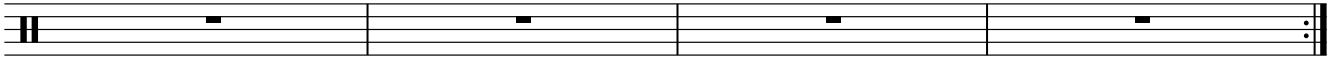
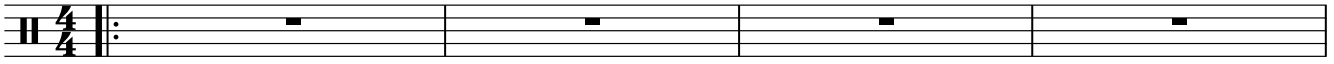


# CHASING CARS (LIVE)

SNOW PATROL

♩ = 106  VERSE



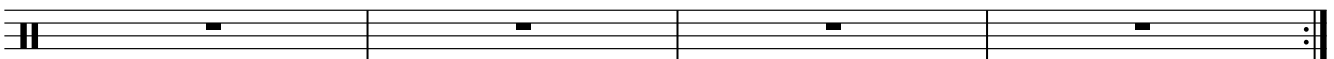
## CHORUS



D.S. al Fine



## VERSE



2 CHASING CARS

CHORUS

Musical notation for the first part of the chorus, consisting of a single staff with a treble clef. It features a sequence of eighth notes with 'x' marks above them, indicating a specific drum pattern. The sequence is: quarter note, eighth note, quarter note, eighth note, quarter note, eighth note, quarter note, eighth note, quarter note, eighth note, quarter note, eighth note, quarter note, eighth note, quarter note, eighth note, quarter note, eighth note. The piece ends with a double bar line and a '2' above it, indicating a two-measure repeat.

Musical notation for the second part of the chorus, consisting of a single staff with a treble clef. It begins with a two-measure repeat (indicated by '2' and a double bar line with a slash), followed by a sequence of eighth notes with 'x' marks above them: quarter note, eighth note, quarter note, eighth note, quarter note, eighth note, quarter note, eighth note, quarter note, eighth note, quarter note, eighth note, quarter note, eighth note, quarter note, eighth note, quarter note, eighth note. The piece ends with a double bar line and a '4X' above it, indicating a four-measure repeat.

OUTRO

Musical notation for the first part of the outro, consisting of a single staff with a treble clef. It starts with a quarter note with an 'x' mark above it, followed by a quarter rest, and then four measures of whole rests.

Musical notation for the second part of the outro, consisting of a single staff with a treble clef. It contains four measures of whole rests.

Fine