

CRUSHCRUSHCRUSH

PARAMORE

♩ = 137

VERSE

Musical notation for the Verse section, consisting of two staves of music in 4/4 time. The notation includes eighth and sixteenth notes, many marked with an 'x' to indicate a crash. There are repeat signs (double dots with a slash) in the second and third measures of the first staff and the second and third measures of the second staff. The second staff ends with a circled note.

PRE CHORUS

Musical notation for the Pre Chorus section, consisting of three staves of music in 4/4 time. The notation features eighth and sixteenth notes, with many notes marked with an 'x' to indicate a crash. There are repeat signs (double dots with a slash) in the third measure of the first staff and the third measure of the second staff. The third staff ends with a circled note.

CHORUS

Musical notation for the Chorus section, consisting of three staves of music in 4/4 time. The notation features eighth and sixteenth notes, with many notes marked with an 'x' to indicate a crash. There are repeat signs (double dots with a slash) in the first measure of the first staff and the first measure of the second staff. The third staff ends with a circled note.

2 CRUSHCRUSHCRUSH

VERSE

The Verse section consists of two staves of music. The first staff contains two measures of music with eighth notes and a quarter note, featuring a circled 'o' above the first note in each measure. The second staff contains two measures of music with eighth notes and a quarter note, featuring a circled 'o' above the first note in the second measure. The section ends with a double bar line and repeat dots.

PRE CHORUS

The Pre Chorus section consists of four staves of music. The first staff contains two measures of music with eighth notes and a quarter note, featuring a circled 'o' above the first note in the second measure. The second staff contains two measures of music with eighth notes and a quarter note, featuring a circled 'o' above the first note in the second measure. The third staff contains two measures of music with eighth notes and a quarter note, featuring a circled 'o' above the first note in the second measure. The fourth staff contains two measures of music with eighth notes and a quarter note, featuring a circled 'o' above the first note in the second measure. The section ends with a double bar line and repeat dots.

CHORUS

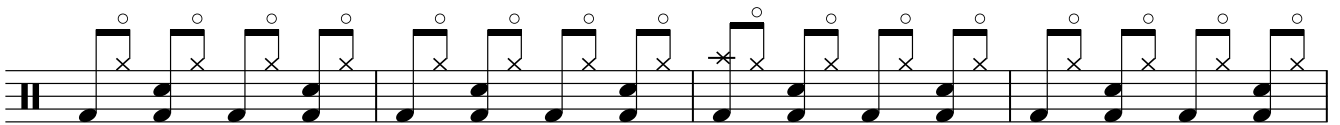
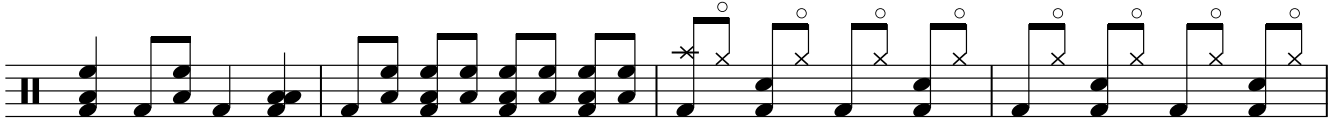
The Chorus section consists of two staves of music. The first staff contains two measures of music with eighth notes and a quarter note, featuring a circled 'o' above the first note in the second measure. The second staff contains two measures of music with eighth notes and a quarter note, featuring a circled 'o' above the first note in the second measure. The section ends with a double bar line and repeat dots.

BREAK

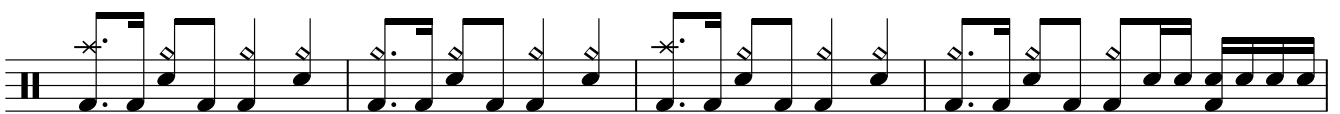
The Break section consists of one staff of music containing two measures of music with eighth notes and a quarter note, featuring a circled 'o' above the first note in the second measure. The section ends with a double bar line and repeat dots.



BRIDGE



CHORUS



OUTRO



Fine