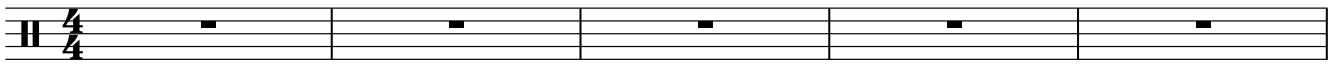


HIGHWAY TO HELL

AC/DC

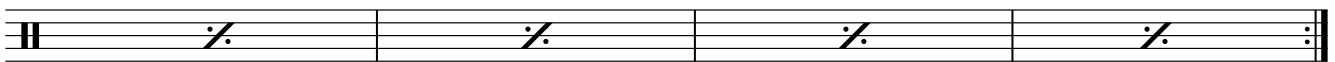
♩ = 118 INTRO Gtr.



VERSE



1.



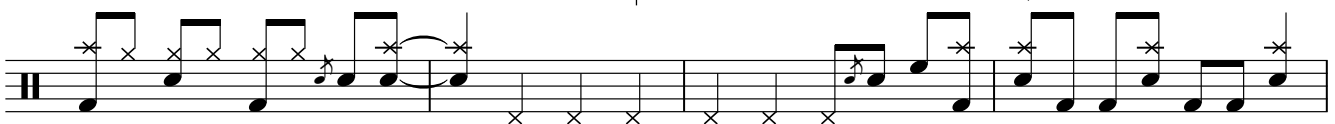
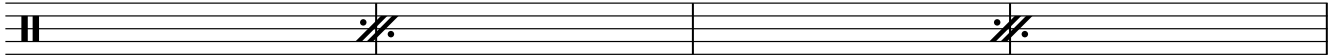
2.

CHORUS



2

2



D.S. al Coda

GUITAR SOLO



2 HIGHWAY TO HELL

Musical notation for the first line of the piece. It consists of a single staff with a treble clef and a double bar line. The notation includes a series of eighth notes with 'x' marks above them, followed by three measures, each containing a double bar line with a '2' above it, indicating a double bar line.

CHORUS

Musical notation for the chorus section. It starts with a treble clef and a repeat sign. The notation includes a series of eighth notes with 'x' marks above them, followed by two measures, each containing a double bar line with a '2' above it, indicating a double bar line.

Musical notation for the final section of the piece. It features two first endings, labeled '1.' and '2.', enclosed in brackets. The notation includes eighth notes with 'x' marks above them, followed by a double bar line. The first ending leads to the second ending, which concludes with a final note and a double bar line. The word 'Fine' is written at the end of the staff.