

LADY MARMALADE

LABELLE

♩ = 118 INTRO

Musical notation for the first line of the Intro section, featuring a 4/4 time signature and a series of eighth notes with 'x' marks above them.

Musical notation for the second line of the Intro section, continuing the eighth note pattern.

VERSE



Musical notation for the first line of the Verse section, featuring a repeat sign and eighth notes.

PRE CHORUS

Musical notation for the first line of the Pre Chorus section, featuring eighth notes.

Musical notation for the second line of the Pre Chorus section, featuring eighth notes.

Musical notation for the third line of the Pre Chorus section, featuring eighth notes and rests.

CHORUS

Musical notation for the first line of the Chorus section, featuring eighth notes.

D.S. al Fine

BRIDGE

Musical notation for the first line of the Bridge section, featuring eighth notes and a repeat sign.

3X

2 LADY MARMALADE

VERSE

Musical notation for the first line of the Verse section, featuring a series of eighth notes with 'x' marks above them, indicating a specific drum pattern. The notation includes a double bar line with repeat dots and a fermata over the final note.

Musical notation for the second line of the Verse section, continuing the eighth-note pattern with 'x' marks and a fermata over the final note.

Musical notation for the third line of the Verse section, showing two endings. The first ending is marked '1.' and the second ending is marked '2.'. Both endings feature eighth notes with 'x' marks and a fermata over the final note.

PRE CHORUS

Musical notation for the first line of the Pre Chorus section, featuring eighth notes with 'x' marks and a fermata over the final note.

Musical notation for the second line of the Pre Chorus section, featuring eighth notes with 'x' marks and a fermata over the final note.

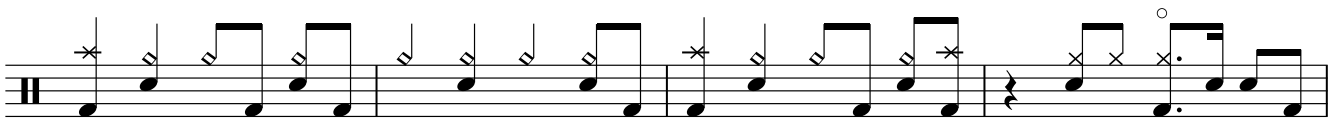
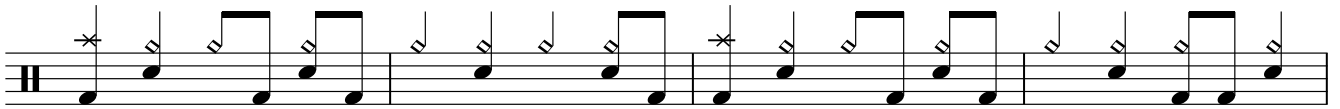
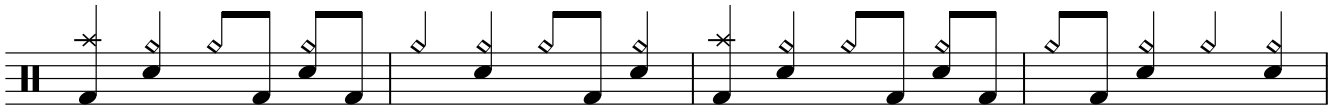
CHORUS

Musical notation for the first line of the Chorus section, featuring eighth notes with 'x' marks and a fermata over the final note.

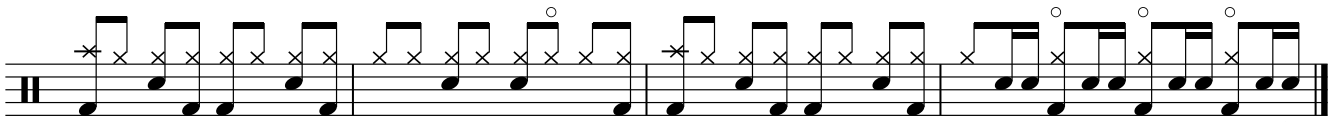
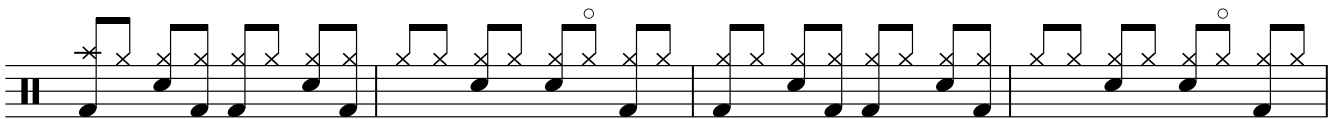
Musical notation for the second line of the Chorus section, featuring eighth notes with 'x' marks and a fermata over the final note.

BREAK

Musical notation for the Break section, featuring eighth notes with 'x' marks and a fermata over the final note.



OUTRO



Play to fade