

# LOVE IS STRONGER THAN JUSTICE

STING

♩ = 166 INTRO

Gtr. / /

## VERSE

CHORUS

Musical notation for the start of the Chorus section. It begins with a double bar line and a 4/4 time signature. The first four measures contain eighth notes with 'x' marks above them. The fifth measure is a triplet of eighth notes, followed by two more triplet measures, and the section ends with a final triplet measure.

A single musical staff with six measures. Each measure contains a double bar line followed by a slash, indicating a repeat or a specific drum pattern.

BRIDGE

Musical notation for the Bridge section. It starts with a 7/8 time signature. The first four measures are eighth notes with 'x' marks and triplet markings. The fifth measure has a circled note. The section ends with a double bar line.

Musical notation for the first part of the D.S. al Coda section. It consists of a single staff with eighth notes and 'x' marks.

D.S. al Coda

Musical notation for the second part of the D.S. al Coda section. It consists of a single staff with eighth notes and 'x' marks.

Musical notation for the third part of the D.S. al Coda section. It consists of a single staff with eighth notes and 'x' marks.

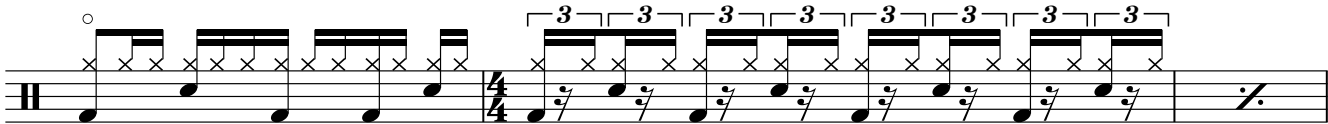
VERSE

Musical notation for the first part of the Verse section. It consists of a single staff with eighth notes and 'x' marks.

Musical notation for the second part of the Verse section. It consists of a single staff with eighth notes and 'x' marks.



CHORUS



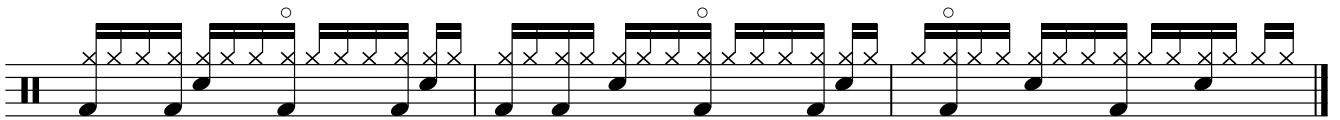
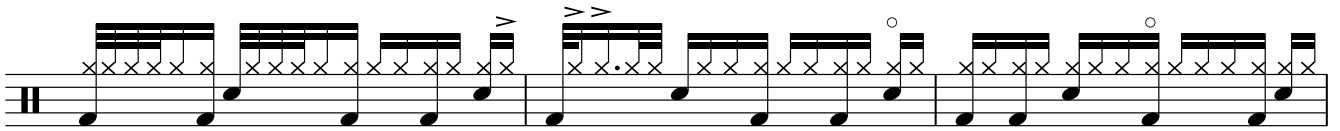
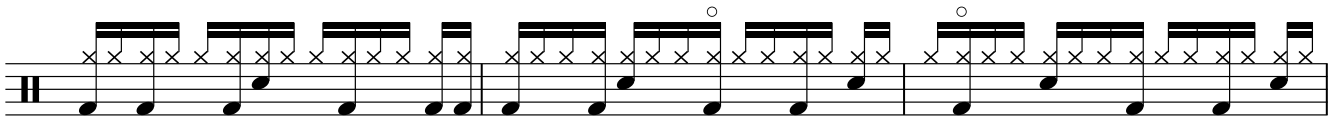
BRIDGE



OUTRO



4 LOVE IS STRONGER



Repeat to fade