

MONKEY WRENCH

FOO FIGHTERS

♩ = 174 INTRO

N.C.

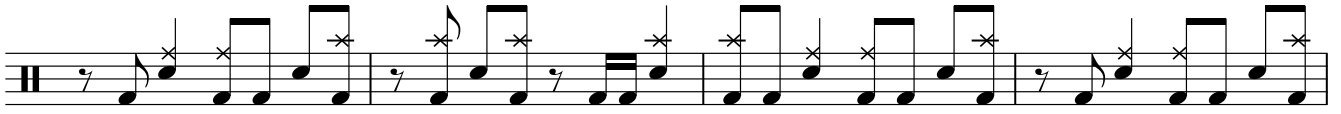
VERSE

VERSE

PRE CHORUS

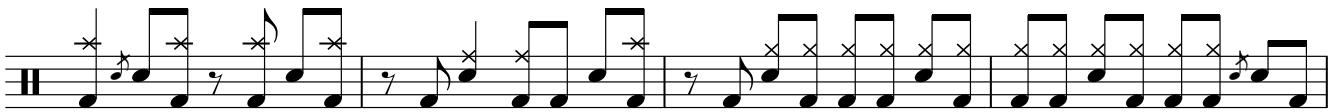
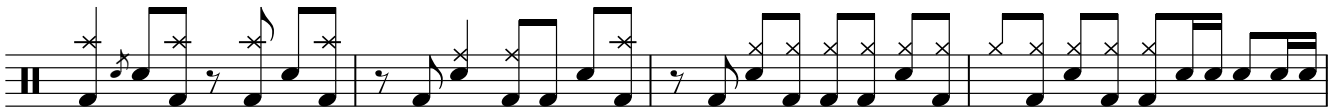
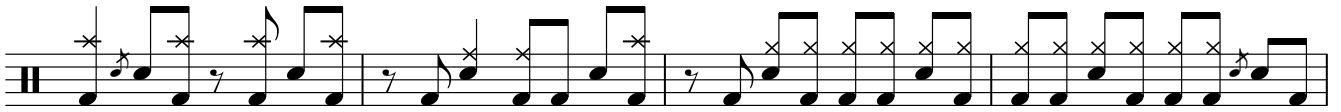
CHORUS

2 MONKEY WRENCH



D.S. al Fine

HITS



BRIDGE



Musical staff with first and second endings. The first ending is marked '1.2.3.' and the second ending is marked '4.'. The notation includes eighth notes and sixteenth notes with asterisks above them, indicating specific techniques.

Musical staff with eighth notes and asterisks above them, indicating specific techniques.

CHORUS

Musical staff for the chorus section, featuring eighth notes, sixteenth notes, and asterisks above them.

OUTRO

Musical staff for the first part of the outro, marked '4X', featuring eighth notes, sixteenth notes, and asterisks above them.

Musical staff for the second part of the outro, marked '3X', featuring eighth notes, sixteenth notes, and asterisks above them.

Musical staff for the final part of the outro, featuring eighth notes, sixteenth notes, and asterisks above them.

Fine