

MORE THAN A FEELING

BOSTON

♩ = 109 INTRO

Musical notation for the Intro section, 4/4 time signature. It consists of seven measures of whole rests, followed by a melodic line starting on the second measure of the eighth measure.

VERSE

Musical notation for the Verse section. It features a rhythmic pattern of eighth notes with 'x' marks above them, indicating a specific drum pattern. The notation includes a 'N.C.' instruction above the staff. The first four measures contain the rhythmic pattern, followed by three measures of a double bar line with a slash and a colon.

Musical notation for the Verse section, continuing from the previous block. It features a double bar line with a slash and a colon, followed by a melodic line starting on the second measure of the fifth measure.

PRE CHORUS

CHORUS

Musical notation for the Pre Chorus and Chorus sections. The Pre Chorus consists of four measures of eighth notes with 'x' marks. The Chorus consists of four measures of eighth notes with 'x' marks.

Musical notation for the Pre Chorus and Chorus sections, continuing from the previous block. The Pre Chorus consists of four measures of eighth notes with 'x' marks. The Chorus consists of four measures of eighth notes with 'x' marks.

Musical notation for the Pre Chorus and Chorus sections, continuing from the previous block. The Pre Chorus consists of four measures of eighth notes with 'x' marks. The Chorus consists of four measures of eighth notes with 'x' marks.

BRIDGE

Musical notation for the Bridge section. It features a rhythmic pattern of eighth notes with 'x' marks, followed by a melodic line starting on the second measure of the fifth measure. The notation includes a double bar line with a slash and a colon, and a circled 'X' symbol at the end of the section.

Musical notation for the Bridge section, continuing from the previous block. It features a rhythmic pattern of eighth notes with 'x' marks, followed by a melodic line starting on the second measure of the fifth measure. The notation includes a double bar line with a slash and a colon, and a circled 'X' symbol at the end of the section. The final two measures feature triplets of eighth notes.

2 MORE THAN A FEELING

Musical notation for the first section of the song. It features a single staff with a treble clef and a key signature of one flat. The notation includes a whole note chord at the beginning, followed by a series of eighth and sixteenth notes. A circled cross symbol is placed above the staff. The section concludes with the instruction "D.S. al Coda".

GUITAR SOLO

Musical notation for the first guitar solo, consisting of four staves. Each staff begins with a circled cross symbol. The notation is primarily composed of eighth and sixteenth notes, with some rests and a double bar line with a slash indicating a section break.

INTRO

Musical notation for the intro section, consisting of a single staff with a treble clef. It begins with a circled cross symbol and a whole note chord, followed by four measures of whole notes.

VERSE

Musical notation for the verse section, consisting of a single staff with a treble clef. It starts with the instruction "Rest 6 Bars" and is followed by a series of eighth and sixteenth notes. A double bar line with a slash is present at the end of the section.

GUITAR SOLO 2

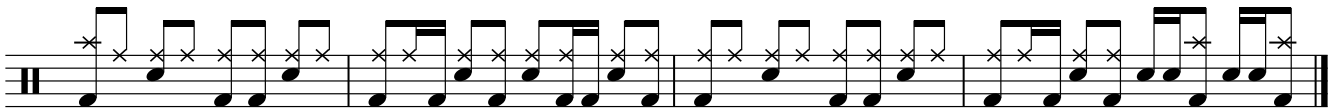
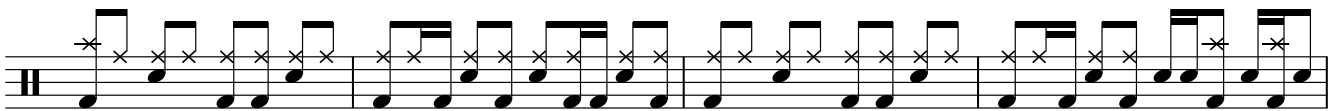
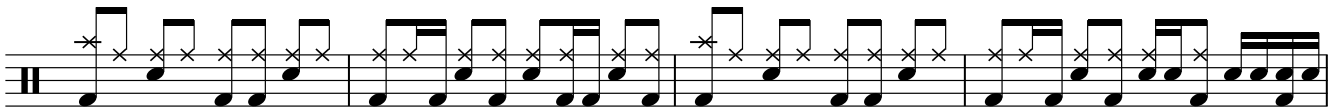
Musical notation for the second guitar solo, consisting of a single staff with a treble clef. It begins with a circled cross symbol and includes the instruction "N.C." (No Chords). The notation features eighth and sixteenth notes, with a double bar line and slash indicating a section break.

Musical notation for the final section, consisting of a single staff with a treble clef. It starts with the instruction "N.C." and includes a double bar line with a slash. The notation continues with eighth and sixteenth notes, ending with a circled cross symbol.

PRE CHORUS



CHORUS/OUTRO



Repeat to fade