

SULTANS OF SWING

DIRE STRAITS

♩ = 148 INTRO

The Intro section consists of two staves of music in 4/4 time. The first staff begins with a double bar line and a 4/4 time signature. The music features a steady eighth-note pattern with various accents and articulations, including asterisks and circles above notes.

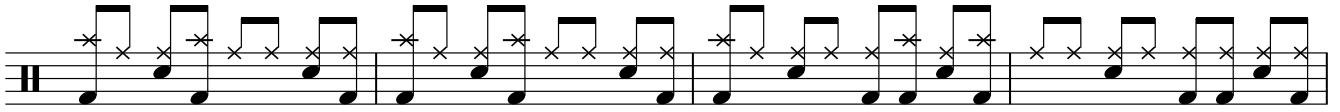
VERSE

The Verse section consists of three staves of music. The first staff begins with a double bar line and a repeat sign. The music continues with the eighth-note pattern, incorporating more complex rhythmic elements like triplets and sixteenth notes.

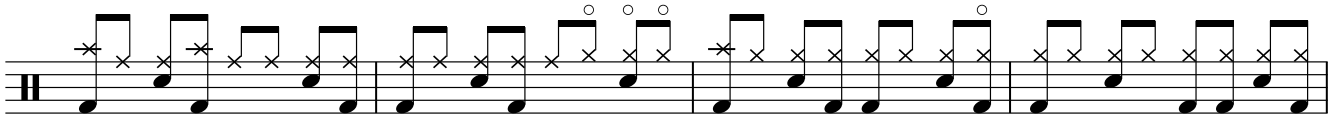
CHORUS

The Chorus section consists of three staves of music. The first staff begins with a double bar line and a repeat sign. The music features a mix of eighth and sixteenth notes. The second staff includes first and second endings, marked with '1.' and '2.' and repeat signs. The third staff continues the rhythmic pattern.

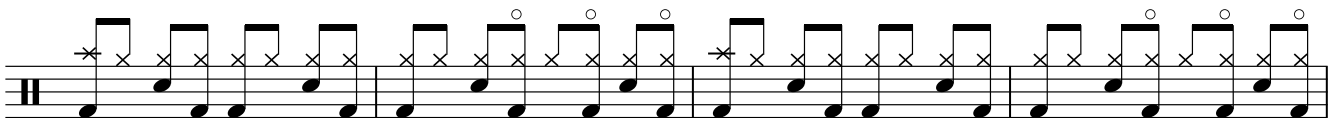
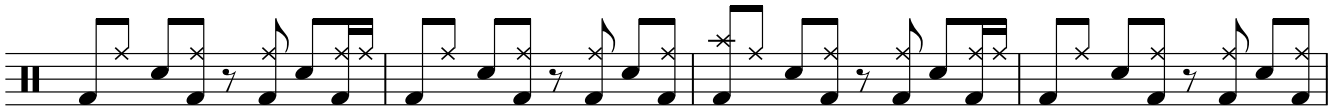
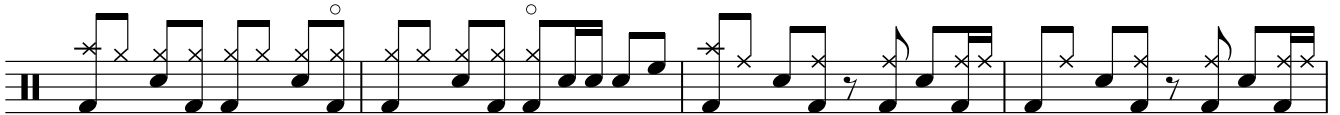
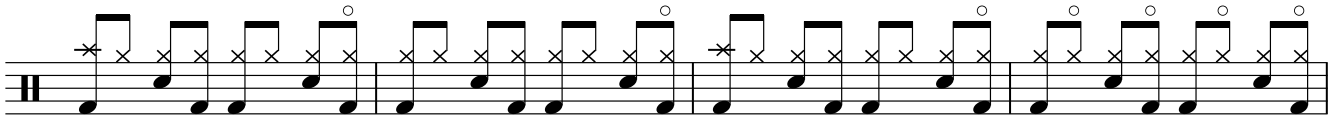
2 SULTANS OF SWING



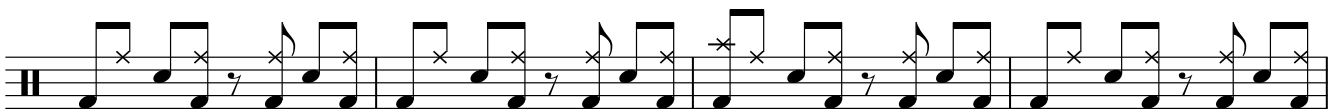
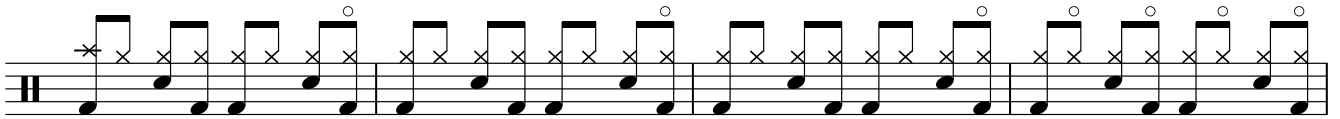
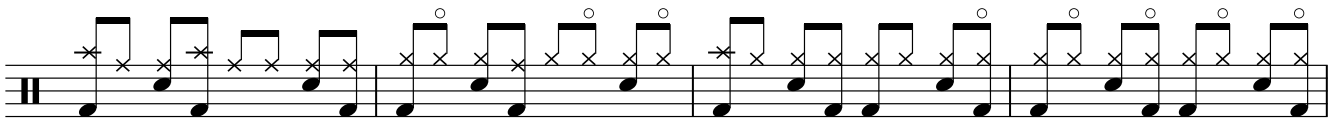
GUITAR SOLO



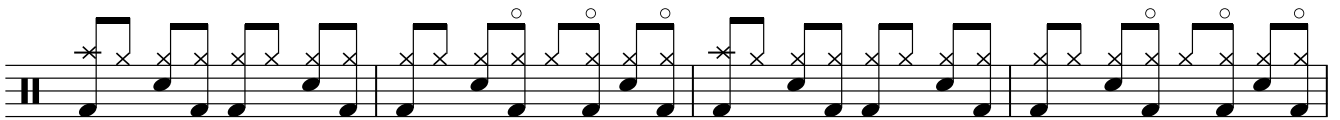
D.S.al Fine



VERSE



CHORUS



GUITAR SOLO



Repeat to fade