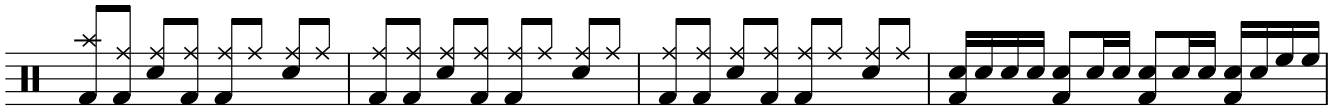
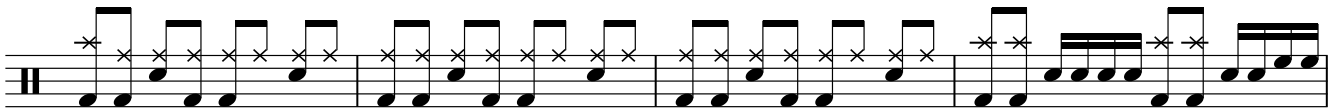
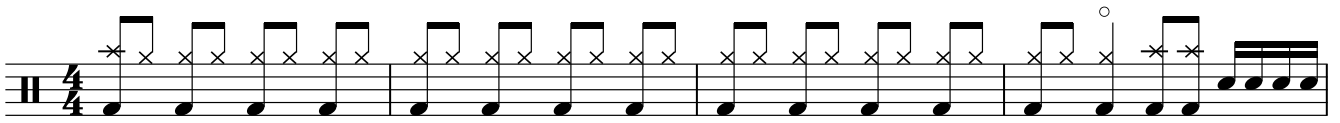


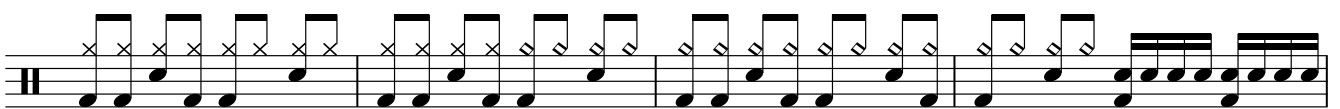
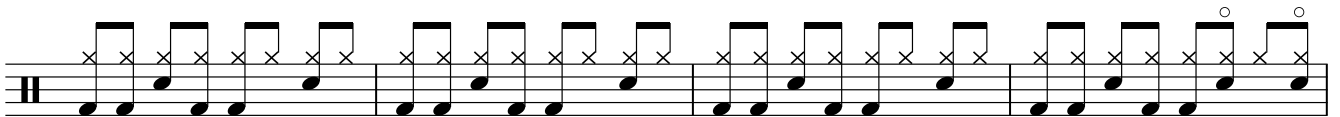
# THE HELL SONG

SUM 41

♩ = 174 INTRO



VERSE



BRIDGE



Musical notation for the first staff of 'THE HELL SONG'. It features a series of eighth notes with 'x' marks above them, indicating a specific drum pattern. The notation concludes with a double bar line and the instruction 'D.S. al Coda'.

D.S. al Coda

CHORUS



Musical notation for the first staff of the CHORUS section. It begins with a Coda symbol and continues with eighth notes and 'x' marks.

Musical notation for the second staff of the CHORUS section, continuing the rhythmic pattern of eighth notes and 'x' marks.

Musical notation for the third staff of the CHORUS section, featuring a more complex rhythmic pattern with some sixteenth notes.

Musical notation for the fourth staff of the CHORUS section, continuing the rhythmic pattern.

Musical notation for the fifth staff of the CHORUS section, concluding with a double bar line and a final flourish.

GUITAR SOLO

Musical notation for the first staff of the GUITAR SOLO section, featuring eighth notes and 'x' marks.

Musical notation for the second staff of the GUITAR SOLO section, concluding with a double bar line and a final flourish.



