

THE POWER OF LOVE

HUEY LEWIS

♩ = 118 INTRO

Musical notation for the Intro section, featuring a 4/4 time signature and various rhythmic patterns including eighth and sixteenth notes. The notation includes a key signature of one sharp (F#) and a common time signature of 4/4. The piece starts with a drum hit (H) and a series of eighth notes. There are two measures with a double bar line and a slash, indicating a repeat or a specific drum pattern. The notation includes a key signature of one sharp (F#) and a common time signature of 4/4. The piece starts with a drum hit (H) and a series of eighth notes. There are two measures with a double bar line and a slash, indicating a repeat or a specific drum pattern.

VERSE

Musical notation for the Verse section, including first and second endings. The notation features a 4/4 time signature and various rhythmic patterns. It includes a key signature of one sharp (F#) and a common time signature of 4/4. The piece starts with a drum hit (H) and a series of eighth notes. There are two measures with a double bar line and a slash, indicating a repeat or a specific drum pattern. The notation includes a key signature of one sharp (F#) and a common time signature of 4/4. The piece starts with a drum hit (H) and a series of eighth notes. There are two measures with a double bar line and a slash, indicating a repeat or a specific drum pattern.

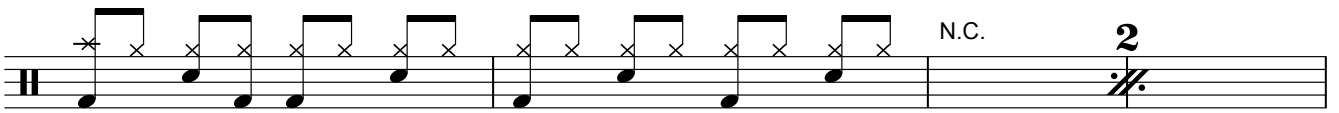
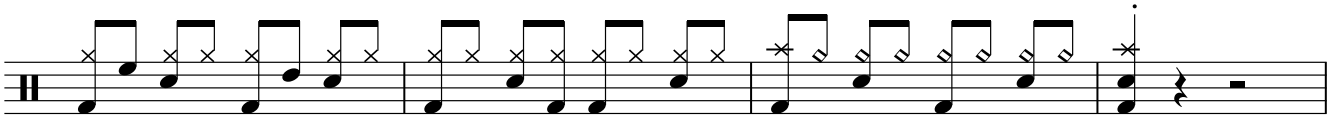
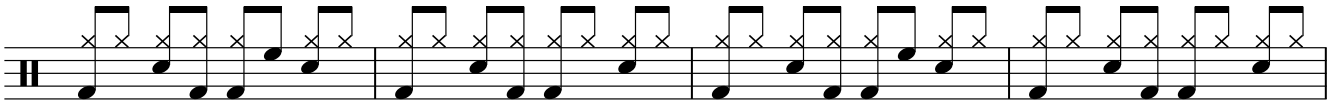
CHORUS

Musical notation for the Chorus section, featuring a key signature change and various rhythmic patterns. The notation includes a key signature of one sharp (F#) and a common time signature of 4/4. The piece starts with a drum hit (H) and a series of eighth notes. There are two measures with a double bar line and a slash, indicating a repeat or a specific drum pattern. The notation includes a key signature of one sharp (F#) and a common time signature of 4/4. The piece starts with a drum hit (H) and a series of eighth notes. There are two measures with a double bar line and a slash, indicating a repeat or a specific drum pattern.

BRIDGE

Musical notation for the Bridge section, including a key signature change and a final drum hit. The notation includes a key signature of one sharp (F#) and a common time signature of 4/4. The piece starts with a drum hit (H) and a series of eighth notes. There are two measures with a double bar line and a slash, indicating a repeat or a specific drum pattern. The notation includes a key signature of one sharp (F#) and a common time signature of 4/4. The piece starts with a drum hit (H) and a series of eighth notes. There are two measures with a double bar line and a slash, indicating a repeat or a specific drum pattern.

D.S. al Coda (verse 2nd ending)



GUITAR SOLO



OUTRO

