

THE TAKE OVER, THE BREAKS OVER

FALL OUT BOY

♩ = 150 INTRO

Musical notation for the Intro section, 4/4 time signature. The notation consists of a single staff with a treble clef and a key signature of one sharp (F#). The tempo is marked as ♩ = 150. The music features a repeating eighth-note pattern with 'x' marks above the notes, indicating muted or choked sounds. The pattern is: G4 (x), A4 (x), B4 (x), C5 (x), G4, A4, B4, C5. This pattern repeats for the first two measures. The third measure has a whole note G4 with a circled 'o' above it. The fourth measure has a whole note G4 with a circled 'o' above it. The section ends with a double bar line and repeat dots.

8: VERSE

Musical notation for the Verse section, 4/4 time signature. The notation consists of a single staff with a treble clef and a key signature of one sharp (F#). The music features a repeating eighth-note pattern with 'x' marks above the notes, indicating muted or choked sounds. The pattern is: G4 (x), A4 (x), B4 (x), C5 (x), G4, A4, B4, C5. This pattern repeats for the first two measures. The third measure has a whole note G4 with a circled 'o' above it. The fourth measure has a whole note G4 with a circled 'o' above it. The section ends with a double bar line and repeat dots.

Musical notation for the Verse section, 4/4 time signature. The notation consists of a single staff with a treble clef and a key signature of one sharp (F#). The music features a repeating eighth-note pattern with 'x' marks above the notes, indicating muted or choked sounds. The pattern is: G4 (x), A4 (x), B4 (x), C5 (x), G4, A4, B4, C5. This pattern repeats for the first two measures. The third measure has a whole note G4 with a circled 'o' above it. The fourth measure has a whole note G4 with a circled 'o' above it. The section ends with a double bar line and repeat dots.

PRE CHORUS

Musical notation for the Pre Chorus section, 4/4 time signature. The notation consists of a single staff with a treble clef and a key signature of one sharp (F#). The music features a repeating eighth-note pattern with 'x' marks above the notes, indicating muted or choked sounds. The pattern is: G4 (x), A4 (x), B4 (x), C5 (x), G4, A4, B4, C5. This pattern repeats for the first two measures. The third measure has a whole note G4 with a circled 'o' above it. The fourth measure has a whole note G4 with a circled 'o' above it. The section ends with a double bar line and repeat dots. A '3X' marking is present at the end of the staff.

Musical notation for the Pre Chorus section, 4/4 time signature. The notation consists of a single staff with a treble clef and a key signature of one sharp (F#). The music features a repeating eighth-note pattern with 'x' marks above the notes, indicating muted or choked sounds. The pattern is: G4 (x), A4 (x), B4 (x), C5 (x), G4, A4, B4, C5. This pattern repeats for the first two measures. The third measure has a whole note G4 with a circled 'o' above it. The fourth measure has a whole note G4 with a circled 'o' above it. The section ends with a double bar line and repeat dots.

CHORUS

Musical notation for the Chorus section, 4/4 time signature. The notation consists of a single staff with a treble clef and a key signature of one sharp (F#). The music features a repeating eighth-note pattern with 'x' marks above the notes, indicating muted or choked sounds. The pattern is: G4 (x), A4 (x), B4 (x), C5 (x), G4, A4, B4, C5. This pattern repeats for the first two measures. The third measure has a whole note G4 with a circled 'o' above it. The fourth measure has a whole note G4 with a circled 'o' above it. The section ends with a double bar line and repeat dots.

Musical notation for the Chorus section, 4/4 time signature. The notation consists of a single staff with a treble clef and a key signature of one sharp (F#). The music features a repeating eighth-note pattern with 'x' marks above the notes, indicating muted or choked sounds. The pattern is: G4 (x), A4 (x), B4 (x), C5 (x), G4, A4, B4, C5. This pattern repeats for the first two measures. The third measure has a whole note G4 with a circled 'o' above it. The fourth measure has a whole note G4 with a circled 'o' above it. The section ends with a double bar line and repeat dots.

Musical notation for the Chorus section, 4/4 time signature. The notation consists of a single staff with a treble clef and a key signature of one sharp (F#). The music features a repeating eighth-note pattern with 'x' marks above the notes, indicating muted or choked sounds. The pattern is: G4 (x), A4 (x), B4 (x), C5 (x), G4, A4, B4, C5. This pattern repeats for the first two measures. The third measure has a whole note G4 with a circled 'o' above it. The fourth measure has a whole note G4 with a circled 'o' above it. The section ends with a double bar line and repeat dots.

D.S. al Coda

2 THE TAKE OVER, THE BREAKS OVER



BRIDGE

First staff of the bridge section, featuring a series of eighth notes with 'x' marks above them, indicating a specific rhythm or technique.

Second staff of the bridge section, continuing the eighth-note pattern with 'x' marks.

Third staff of the bridge section, including a triplet of eighth notes in the middle.

Fourth staff of the bridge section, ending with a circled 'o' above the final note.

Fifth staff of the bridge section, featuring a circled 'o' above a note and a '3X' marking above a triplet of eighth notes.

GUITAR SOLO

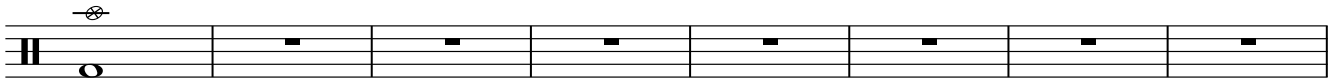
First staff of the guitar solo section, featuring eighth notes with diamond-shaped accents above them.

Second staff of the guitar solo section, including a triplet of eighth notes at the end.

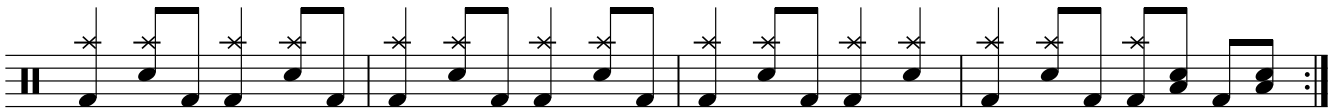
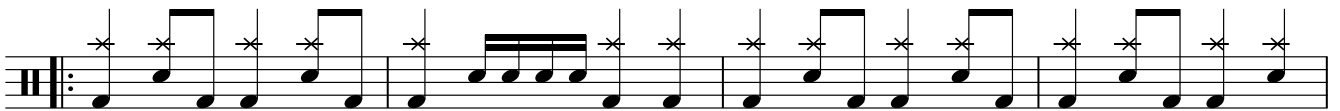
Third staff of the guitar solo section, continuing the eighth-note pattern with diamond-shaped accents.



BREAK



OUTRO



Fine