

TICKETS TO WATERFALLS

JACK BRUCE

♩ = 148 ***f*** INTRO Piano

The Intro section consists of six staves of music in 4/4 time. The first staff begins with a whole rest for three measures, followed by a quarter-note melody. The second staff features a rhythmic pattern of eighth notes with diamond-shaped accents. The third staff continues this pattern with some notes marked with 'x'. The fourth staff includes eighth notes with 'x' marks and quarter notes. The fifth and sixth staves contain rests and quarter notes, ending with a repeat sign.

f A SECTION

The A Section is a single staff of music featuring a repeating eighth-note chordal pattern throughout.

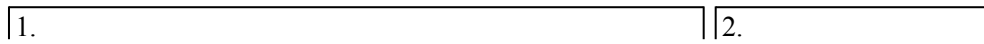
B SECTION

The B Section consists of two staves of music. The first staff features a rhythmic pattern of eighth notes with diamond-shaped accents. The second staff continues this pattern with some notes marked with 'x'.

2 TICKETS TO WATERFALLS

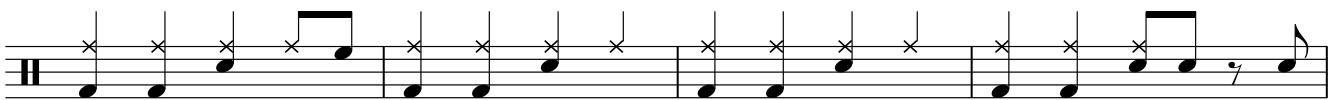


GUITAR SOLO



D.S. al Coda

OUTRO



To fade