



2 WORKING MAN

CHORUS

The first line of the chorus consists of a single staff with a double bar line at the beginning. It contains a complex rhythmic pattern of eighth and sixteenth notes, with several rests and accents. The pattern is dense and intricate, typical of a drum solo.

Tempo change

The first line after the tempo change shows a single staff with a double bar line. The rhythmic pattern is significantly slower and more spaced out than the previous section, featuring fewer notes and longer rests.

The second line after the tempo change continues the slower rhythmic pattern from the first line, maintaining the same tempo and note values.

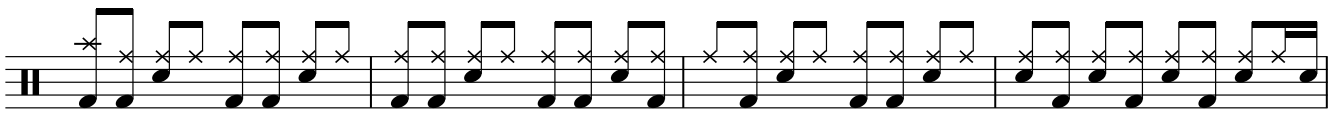
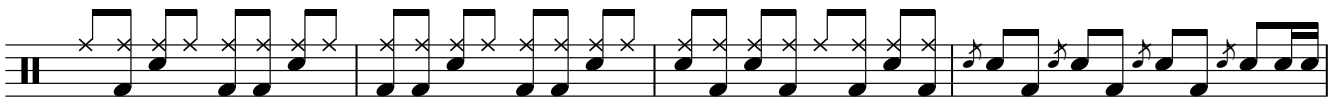
The third line after the tempo change features a double bar line in the middle of the staff, indicating a section change or a specific measure. The rhythmic pattern continues on either side of the bar line.

The fourth line after the tempo change shows a consistent rhythmic pattern of eighth and sixteenth notes, continuing the slower tempo.

The fifth line after the tempo change features a double bar line in the middle of the staff. The rhythmic pattern continues on either side of the bar line, with some notes marked with an 'x'.

The sixth line after the tempo change shows a consistent rhythmic pattern of eighth and sixteenth notes, continuing the slower tempo.

The seventh line after the tempo change shows a consistent rhythmic pattern of eighth and sixteenth notes, continuing the slower tempo.



HIT SECTION



4 WORKING MAN

Musical notation for the first section of 'Working Man', featuring a rhythmic pattern of eighth notes with 'x' marks above them.

GUITAR SOLO

Musical notation for the guitar solo section, including a triplet and an open circle symbol.

HIT SECTION

Musical notation for the hit section, starting with 'Play 28 More'.

Musical notation for the hit section, continuing the rhythmic pattern.

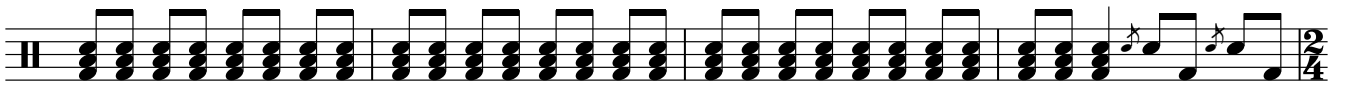
Musical notation for the hit section, continuing the rhythmic pattern.

Musical notation for the hit section, continuing the rhythmic pattern.

BRIDGE

Musical notation for the bridge section, ending with a double bar line and a '2' above it.

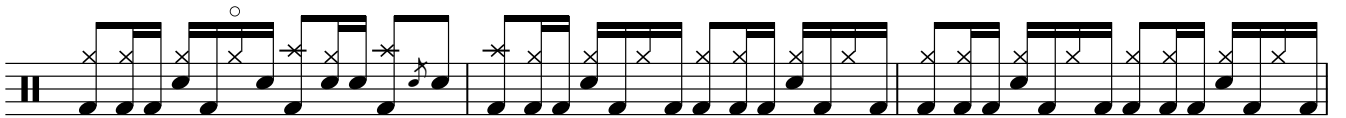
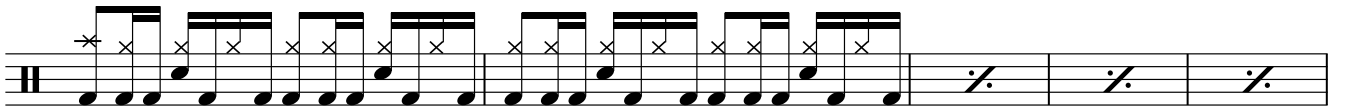
Musical notation for the bridge section, showing two measures with a double bar line and a '2' above it.



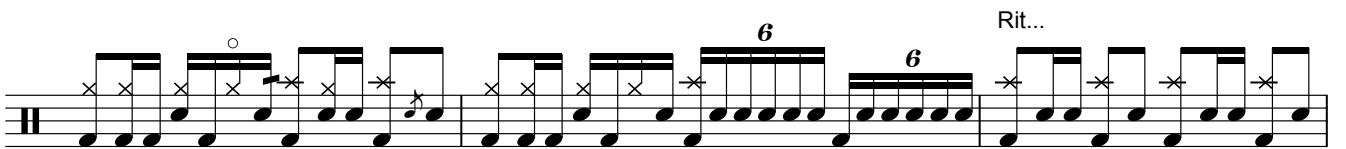
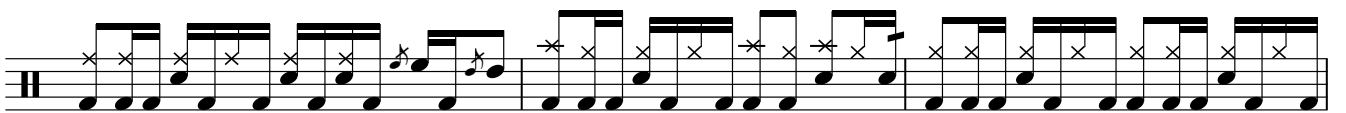
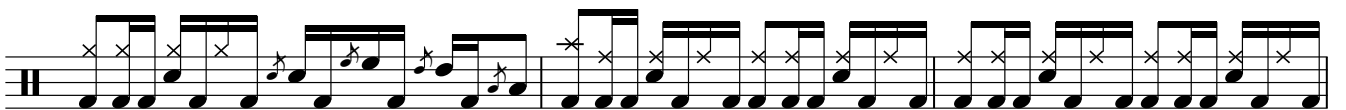
Tempo change



VERSE



OUTRO



6 WORKING MAN

Musical notation for the piece 'WORKING MAN'. The notation is written on a single staff with a double bar line at the beginning and end. It features a series of rhythmic patterns: a triplet of eighth notes, followed by a series of eighth notes, and then a series of quarter notes. The notation includes various symbols such as an 'x' above a note, a '7' below a note, and a '6' above a note. The word 'Fine' is written at the end of the piece.