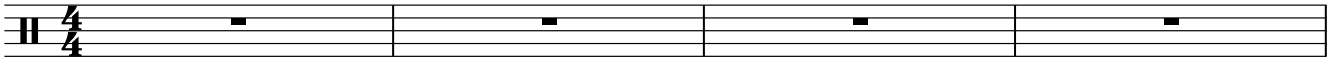


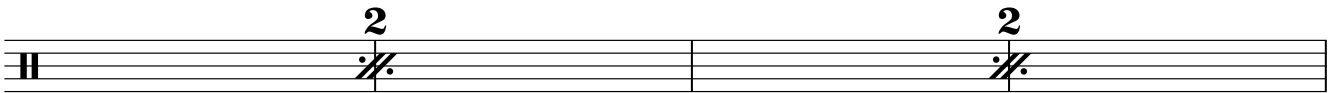
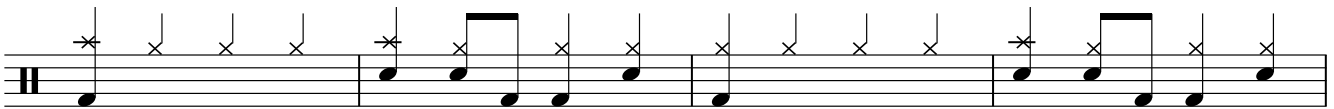
YOUR TOUCH

THE BLACK KEYS

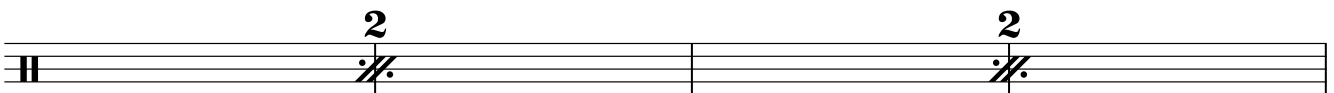
♩ = 117 **INTRO** Gtr.



VERSE



CHORUS



D.S. al Fine

GUITAR SOLO



2 YOUR TOUCH

A musical staff with a treble clef and a common time signature. It contains two measures, each consisting of a double bar line with a '2' above it, indicating a two-measure rest.

BREAK

A musical staff with a treble clef and a common time signature. It starts with a quarter note on G4 marked with an 'x', followed by a quarter rest, and then three measures of whole rests.

A musical staff with a treble clef and a common time signature. It contains a sequence of quarter notes on G4, A4, B4, C5, B4, A4, G4, and F4, each marked with an 'x'. The final note is beamed to the next. The piece ends with a double bar line and a '2' above it, indicating a two-measure rest.

VERSE

A musical staff with a treble clef and a common time signature. It contains a sequence of quarter notes on G4, A4, B4, C5, B4, A4, G4, and F4, each marked with an 'x'. The final note is beamed to the next. The piece ends with a double bar line and a '2' above it, indicating a two-measure rest.

A musical staff with a treble clef and a common time signature. It contains two measures, each consisting of a double bar line with a '2' above it, indicating a two-measure rest.

OUTRO

A musical staff with a treble clef and a common time signature. It contains a sequence of quarter notes on G4, A4, B4, C5, B4, A4, G4, and F4, each marked with an 'x'. The final note is beamed to the next. The piece ends with a double bar line and a '2' above it, indicating a two-measure rest.

A musical staff with a treble clef and a common time signature. It contains two measures, each consisting of a double bar line with a '2' above it, indicating a two-measure rest. The third measure contains a quarter note on G4 marked with an 'x', followed by a quarter rest. The piece ends with a double bar line.