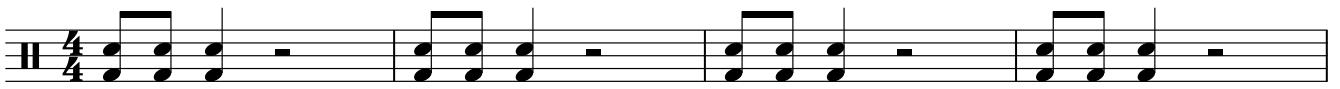


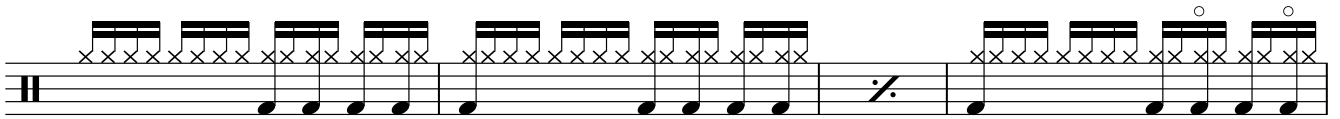
FLUORESCENT ADOLESCENT

ARCTIC MONKEYS

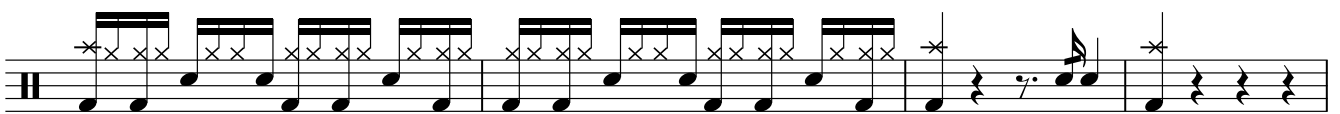
♩ = 112 INTRO



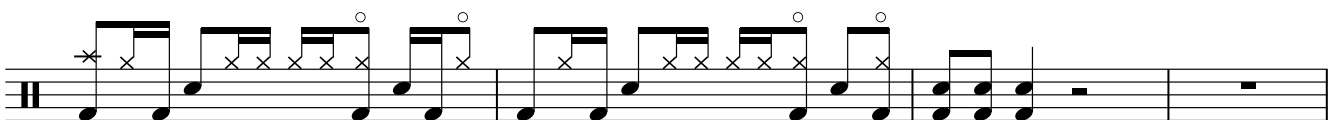
VERSE



PRE CHORUS



CHORUS



2 FLUORESCENT ADOLESCENT

Musical notation for the first staff, featuring a drum set icon on the left and a sequence of notes with 'x' marks above them. The text "N.C." is written above the staff.

Musical notation for the second staff, featuring a drum set icon on the left and a sequence of notes with 'x' marks above them.

BRIDGE

Musical notation for the BRIDGE section, featuring a drum set icon on the left and a sequence of notes with 'x' marks above them.

BREAK

Musical notation for the BREAK section, featuring a drum set icon on the left and a sequence of notes with 'x' marks above them.

Musical notation for the section following the break, featuring a drum set icon on the left and a sequence of notes with 'x' marks above them.

OUTRO CHORUS

Musical notation for the OUTRO CHORUS section, featuring a drum set icon on the left and a sequence of notes with 'x' marks above them. The text "N.C." is written above the staff.

Musical notation for the first ending of the OUTRO CHORUS, featuring a drum set icon on the left and a sequence of notes with 'x' marks above them. The text "N.C." is written above the staff. A first ending bracket is shown above the staff.

Musical notation for the second ending of the OUTRO CHORUS, featuring a drum set icon on the left and a sequence of notes with 'x' marks above them. A second ending bracket is shown above the staff.

Fine