

# MORE THAN A FEELING

BOSTON

♩ = 109 INTRO

Intro musical notation in 4/4 time. The first six measures contain whole rests. The final measure contains a sequence of eighth notes: G4, A4, B4, C5, B4, A4, G4.

## VERSE

Verse musical notation line 1. It starts with a treble clef and a common time signature. The first six measures are eighth notes with an 'x' above each, indicating a drum hit. The notes are G4, A4, B4, C5, B4, A4. The seventh measure is marked 'N.C.' (No Chord) and contains a slash with a vertical line through it. The eighth, ninth, and tenth measures also contain slashes with vertical lines through them.

Verse musical notation line 2. The first three measures contain slashes with vertical lines through them. The fourth measure contains a whole note G4 with a circled 'x' above it. The fifth measure contains a whole rest. The sixth measure contains eighth notes: G4, A4, B4, C5, B4, A4, G4.

## PRE CHORUS

## CHORUS

Pre Chorus musical notation line 1. It starts with a treble clef and a common time signature. The first six measures are eighth notes with an 'x' above each, indicating a drum hit. The notes are G4, A4, B4, C5, B4, A4. The seventh measure is marked 'N.C.' and contains a slash with a vertical line through it. The eighth, ninth, and tenth measures also contain slashes with vertical lines through them.

Pre Chorus musical notation line 2. The first three measures contain slashes with vertical lines through them. The fourth measure contains a whole note G4 with a circled 'x' above it. The fifth measure contains a whole rest. The sixth measure contains eighth notes: G4, A4, B4, C5, B4, A4, G4.

Pre Chorus musical notation line 3. The first three measures contain slashes with vertical lines through them. The fourth measure contains a whole note G4 with a circled 'x' above it. The fifth measure contains a whole rest. The sixth measure contains eighth notes: G4, A4, B4, C5, B4, A4, G4.

## BRIDGE

Bridge musical notation line 1. It starts with a treble clef and a common time signature. The first six measures are eighth notes with an 'x' above each, indicating a drum hit. The notes are G4, A4, B4, C5, B4, A4. The seventh measure is marked 'N.C.' and contains a slash with a vertical line through it. The eighth, ninth, and tenth measures also contain slashes with vertical lines through them.

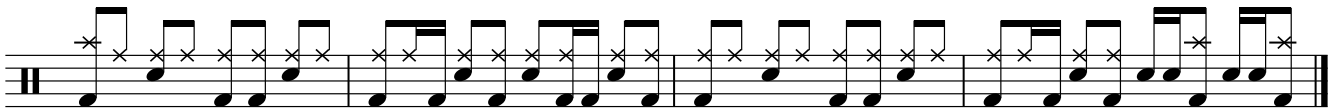
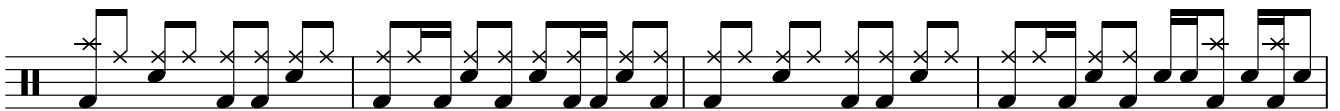
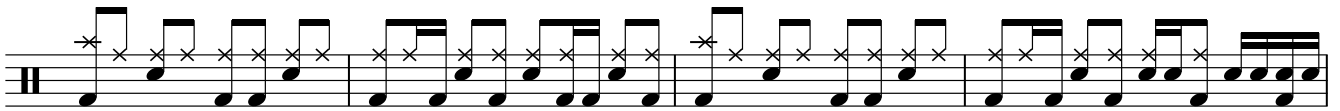
Bridge musical notation line 2. The first three measures contain slashes with vertical lines through them. The fourth measure contains a whole note G4 with a circled 'x' above it. The fifth measure contains a whole rest. The sixth measure contains eighth notes: G4, A4, B4, C5, B4, A4, G4. The seventh measure contains a triplet of eighth notes: G4, A4, B4. The eighth measure contains a whole note G4. The ninth measure contains a triplet of eighth notes: G4, A4, B4. The tenth measure contains a whole note G4.



PRE CHORUS



CHORUS/OUTRO



Repeat to fade