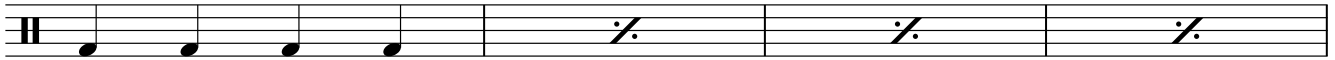
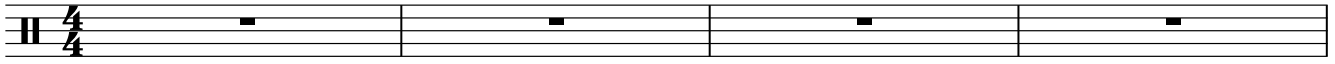


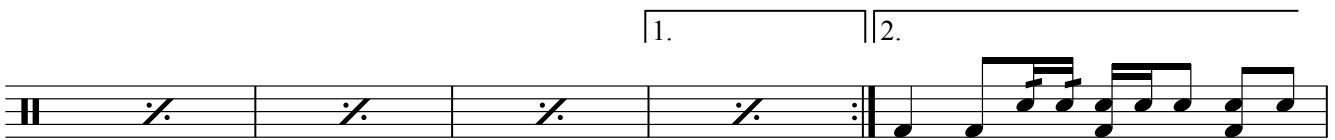
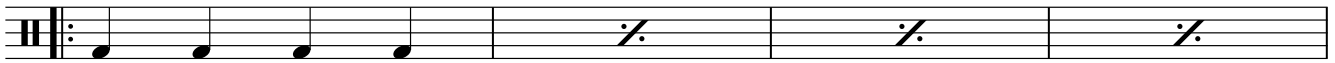
MOVES LIKE JAGGER

MAROON 5

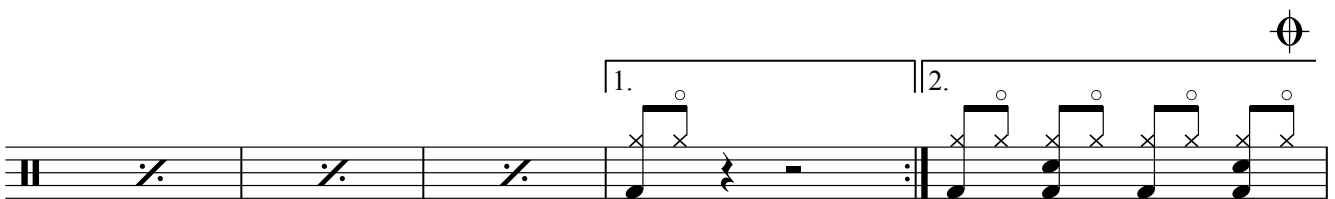
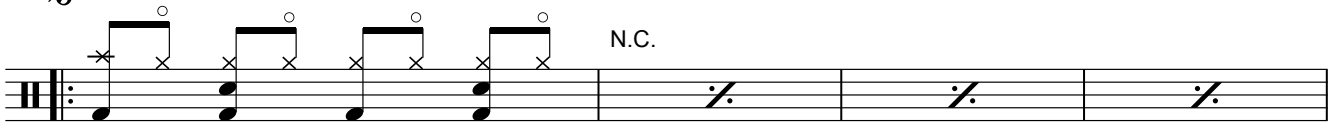
♩ = 128 INTRO



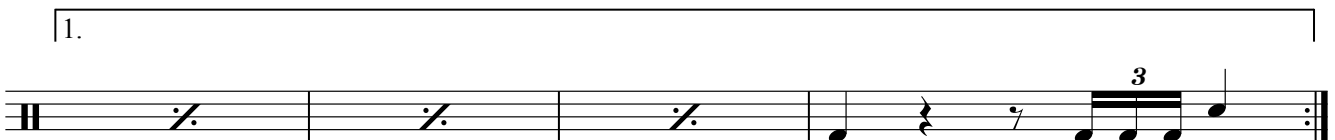
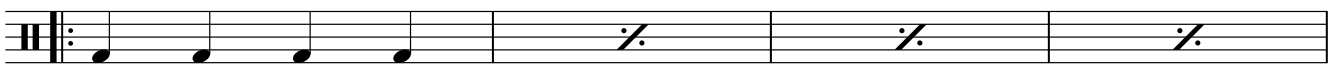
VERSE



CHORUS



VERSE



2 MOVES LIKE JAGGER

2.

6 3

D.S. al Coda

 BRIDGE

Musical notation for the bridge section, consisting of five staves. The first staff has a simple rhythmic pattern. The second and third staves have rests followed by a melodic phrase. The fourth and fifth staves have rests followed by a melodic phrase with accents.

CHORUS

N.C.

OUTRO Gtr.