

# USE SOMEBODY

KINGS OF LEON

♩ = 140 INTRO

Musical notation for the first line of the intro, featuring a 4/4 time signature and a double bar line with a '2' above it.

Musical notation for the first measure of the first ending, marked with a '1.' and a double bar line with a '2' above it.

Musical notation for the second measure of the first ending, marked with a '2.' and ending with a double bar line.

## VERSE

4X

Musical notation for the first measure of the verse, consisting of a single note on a staff.

Musical notation for the second measure of the verse, including a 'Play 14 more' instruction.

## CHORUS

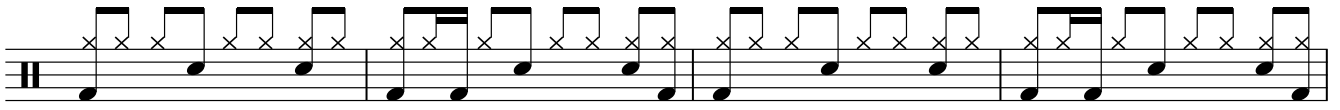
Musical notation for the first line of the chorus, featuring a 4/4 time signature and a double bar line.

Musical notation for the second line of the chorus, featuring a 4/4 time signature and a double bar line.

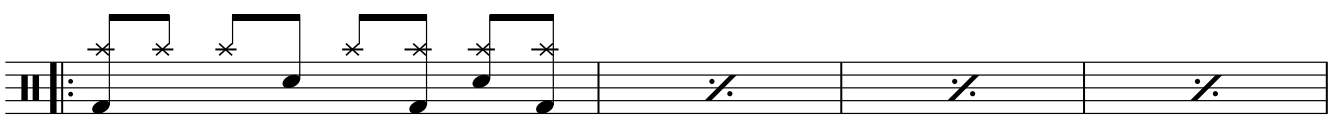
## VERSE

Musical notation for the first line of the second verse, featuring a 4/4 time signature and a double bar line.

2 USE SOMEBODY



CHORUS



BRIDGE



OUTRO



Fine