

WORKING MAN

RUSH

♩ = 80 INTRO

VERSE

Musical notation for the Intro section. It begins with a 4/4 time signature and a 'Rest 4 Bars' instruction. Above the staff, there are four measures of rhythmic notation, each consisting of a quarter note followed by an eighth note, with an 'x' above the quarter note and an 'o' above the eighth note. The main staff contains four measures of rests, each marked with a double bar line and a slash.

Musical notation for the Verse section. It consists of two lines of notation. The first line has four measures of rhythmic notation with 'x' and 'o' markings. The second line has four measures of rhythmic notation, with the first measure marked 'N.C.' (No Chord). The notation includes quarter notes and eighth notes.

CHORUS

Musical notation for the first line of the Chorus section, consisting of four measures of rhythmic notation with 'x' markings above the notes.

Musical notation for the second line of the Chorus section, consisting of four measures of rhythmic notation with 'x' markings above the notes.

VERSE

Musical notation for the first line of the Verse section, consisting of four measures of rhythmic notation with 'x' markings above the notes.

Musical notation for the second line of the Verse section. It consists of two lines of notation. The first line has four measures of rhythmic notation with 'x' markings. The second line has four measures of rhythmic notation, with the first measure marked 'N.C.' (No Chord). The notation includes quarter notes and eighth notes.

CHORUS

Musical notation for the Chorus section. It consists of two lines of notation. The first line has four measures of rhythmic notation with 'x' markings. The second line has four measures of rhythmic notation, with the last two measures marked with a '6' above the notes, indicating a sixteenth-note triplet.

GUITAR SOLO

Musical notation for the Guitar Solo section. It consists of two lines of notation. The first line has four measures of rhythmic notation with 'x' markings. The second line has four measures of rhythmic notation, with the first measure marked with a double bar line and a slash, and the last measure marked with a double bar line and a colon.

2 WORKING MAN

CHORUS

Musical notation for the first line of the chorus, featuring a complex rhythmic pattern with eighth and sixteenth notes and various drum symbols like 'x' and 'o'.

Tempo change

Musical notation for the first line after the tempo change, showing a slower, more spaced-out rhythm.

Musical notation for the second line after the tempo change, continuing the slower rhythm.

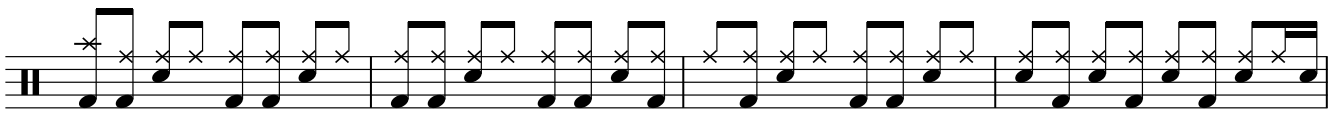
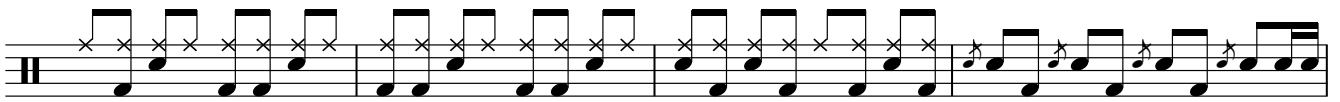
Musical notation for the third line after the tempo change, including a double bar line with repeat dots.

Musical notation for the fourth line after the tempo change, featuring a consistent eighth-note pattern.

Musical notation for the fifth line after the tempo change, including a double bar line with repeat dots and a circled 'o' symbol.

Musical notation for the sixth line after the tempo change, continuing the eighth-note pattern.

Musical notation for the seventh line after the tempo change, continuing the eighth-note pattern.



HIT SECTION



4 WORKING MAN

Musical notation for the first section of 'Working Man', featuring a rhythmic pattern of eighth notes with 'x' marks above them.

GUITAR SOLO

Musical notation for the guitar solo section, including a triplet of eighth notes.

HIT SECTION

Musical notation for the hit section, starting with the instruction "Play 28 More".

Musical notation for the first line of the hit section.

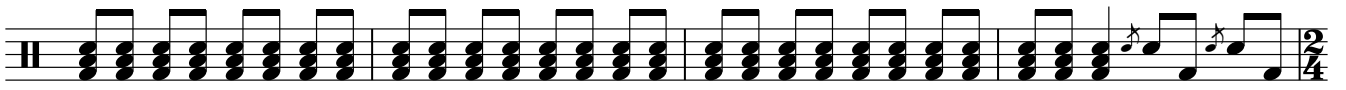
Musical notation for the second line of the hit section.

Musical notation for the third line of the hit section.

BRIDGE

Musical notation for the bridge section, ending with a double bar line and a "2" above it.

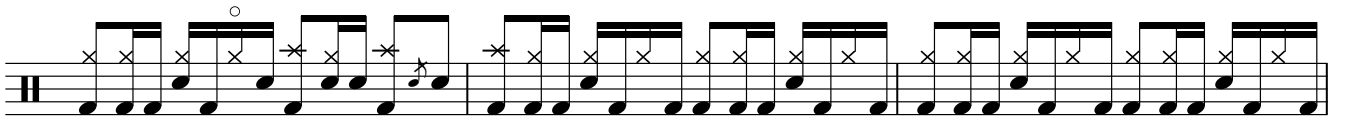
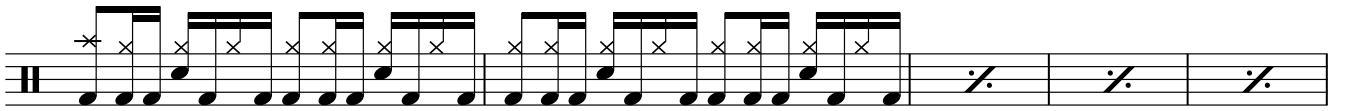
Musical notation for the final section, consisting of two measures with double bar lines and a "2" above each.



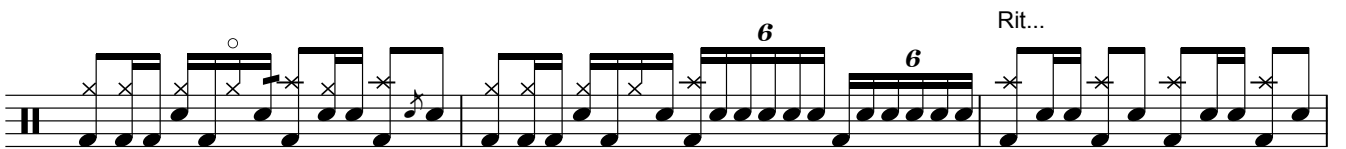
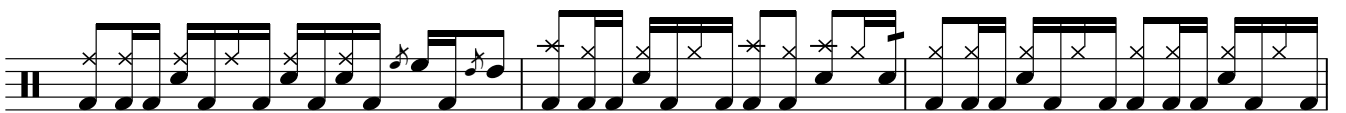
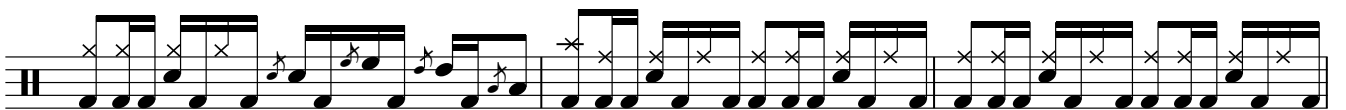
Tempo change



VERSE



OUTRO



6 WORKING MAN

Musical notation for the piece 'WORKING MAN'. The notation is written on a single staff with a double bar line at the beginning and end. It features a series of rhythmic patterns, including a complex sequence of eighth notes in the first measure, followed by a series of eighth notes in the second measure, and a series of eighth notes in the third measure. The notation includes various symbols such as a circled 'x' above the first measure, a circled 'o' above the second measure, and a circled 'x' above the final measure. The word 'Fine' is written at the end of the notation.